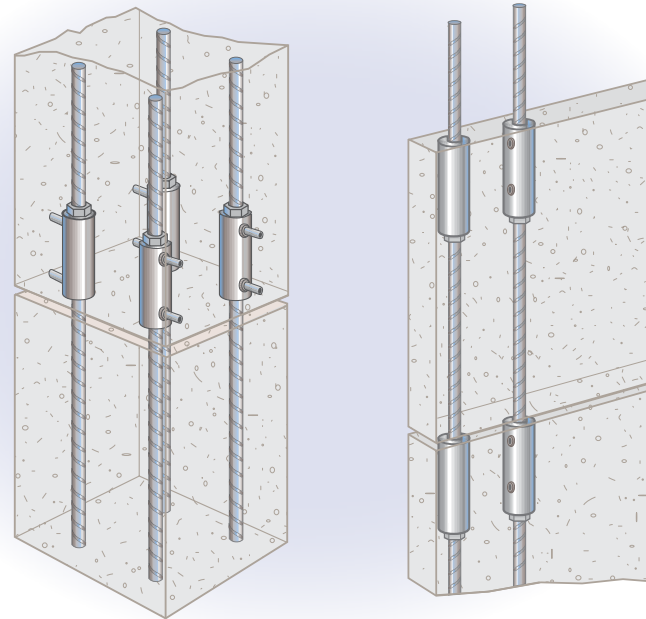


# Applications

- Column to Column
- Columns to Foundations
- Shear Walls to Foundations
- Shear Wall to Shear Wall
- Panel to Panel
- Walls to Floor Slab
- Architectural Panels

# Projects

- I-95 Fuller Warren Bridge; Jacksonville, Florida – USA
- Pacific Plaza Office Complex; San Francisco, California – USA
- Houston International Air Traffic Control Tower; Houston, Texas – USA
- Olympic Stadium; Atlanta, Georgia – USA
- Taj Mahal Casino Parking Garage; Atlantic City, New Jersey – USA
- Corcoran Prison; Corcoran, California – USA
- Arena Central; Birmingham – UK
- Salamenca Street; London – UK
- Office Development; Dartford, Kent – UK
- Sydney Stadium; Sydney – Australia
- Mazeikiu Nafta Refinery; Mazeikiai – Lithuania
- Terminal 5; Heathrow Airport – UK
- One Hyde Park Apartments; London – UK
- Athlete's Village London 2012 Olympics; Stratford City, London – UK
- Highbury Square; London – UK



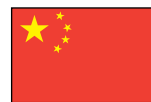
Grout-filled connection designed for moment capacity in precast construction.



www.erico.pentair.com



**AUSTRALIA**  
Phone 1-800-263-508  
Fax 1-800-423-091



**CHINA**  
Phone +86-21-3430-4878  
Fax +86-21-5831-8177



**HUNGARY**  
Phone 06-800-16538  
Fax +39-0244-386-107



**NORWAY**  
Phone 800-100-73  
Fax 800-100-66



**SWITZERLAND**  
Phone 0800-55-86-97  
Fax 0800-55-96-15



**BELGIUM**  
Phone 0800-757-48  
Fax 0800-757-60



**DENMARK**  
Phone 808-89-372  
Fax 808-89-373



**INDONESIA**  
Phone +62-21-575-0941  
Fax +62-21-575-0942



**POLAND**  
Phone +48-71-349-04-60  
Fax +48-71-349-04-61



**THAILAND**  
Phone +66-2-267-5776  
Fax +66-2-636-6988



**BRAZIL**  
Phone +55-11-3623-4333  
Fax +55-11-3621-4066



**FRANCE**  
Phone 0-800-901-793  
Fax 0-800-902-024



**ITALY**  
Phone 800-870-938  
Fax 800-873-935



**SINGAPORE**  
Phone +65-6-268-3433  
Fax +65-6-268-1389



**UNITED ARAB EMIRATES**  
Phone +971-4-881-7250  
Fax +971-4-881-7270



**CANADA**  
Phone +1-800-677-9089  
Fax +1-800-677-8131



**GERMANY**  
Phone 0-800-189-0272  
Fax 0-800-189-0274



**MEXICO**  
Phone +52-55-5260-5991  
Fax +52-55-5260-3310



**SPAIN**  
Phone 900-993-154  
Fax 900-807-333



**UNITED KINGDOM**  
Phone 0808-2344-670  
Fax 0808-2344-676



**CHILE**  
Phone +56-2-370-2908  
Fax +56-2-369-5657



**HONG KONG**  
Phone +852-2764-8808  
Fax +852-2764-4486



**NETHERLANDS**  
Phone 0800-0200-135  
Fax 0800-0200-136



**SWEDEN**  
Phone 020-790-908  
Fax 020-798-964



**UNITED STATES**  
Phone 1-800-753-9221  
Fax +1-440-248-0723



## LENTON INTERLOK THE SPLICING SOLUTION FOR THE PRECAST CONCRETE CONSTRUCTION INDUSTRY



ACI is a registered trademark of American Concrete Institute.  
IBC is a registered trademark of International Code Council, Inc.

© 2007, 2010, 2013, 2015 Pentair All Rights Reserved  
Pentair, CADDY, CADWELD, CRITEC, ERICO, ERIFLEX, ERITECH and LENTON are owned by Pentair or its global affiliates. All other trademarks are the property of their respective owners. Pentair reserves the right to change specifications without prior notice.

CP7C-WWEN C629LT13WWEN WB0613







The LENTON INTERLOK provides a cost effective and quick option with a dramatic increase in design flexibility of precast concrete elements. LENTON's growing project portfolio stands testament to the advantages provided by the system. LENTON INTERLOK has been used in construction of parking structures, hospitals, high rises, stadiums, bridges, air traffic control towers and many other types of projects.

## The Rebar Splicing Solution for the Precast Concrete Construction Industry

Construction in precast concrete is gaining popularity worldwide. Structures which were previously made only with cast-in-situ concrete are now being constructed using precast concrete. To facilitate this process, special rebar splicing systems are needed to increase the structural integrity of precast concrete constructions.



As a leader in reinforcing bar splicing, LENTON has developed the LENTON INTERLOK system as the solution to creating rebar continuity between precast concrete elements. The LENTON INTERLOK can connect #5 (16 mm) through #18 (57 mm) rebar using the LENTON taper threaded system and a special high strength grout.

The result is a full strength splice that is reliable, forgiving to rebar misalignment and, as no closure pour is required, undeniably efficient.

Architects and engineers are now afforded previously unattainable flexibility in the design and application of precast concrete elements, while gaining efficiencies in construction time, cost and aesthetics.

Load bearing applications such as columns, beams and shear walls can now be efficiently incorporated into projects using segmental precast construction techniques, where previously, only structural steel or cast-in-situ concrete would have been considered.

As your rebar splicing specialist, LENTON offers you the expertise you need for all your rebar splicing projects.

### Benefits of LENTON INTERLOK:

- Helps ensure structural integrity between the precast sections.
- Provides load path continuity of the reinforcement, acting as one continuous bar.
- Designed for all high yield deformed rebar sizes from #5 to #18 (16 mm to 57 mm).
- Eliminates field welding damage to concrete
- Helps to overcome rebar misalignment problems in joining of precast concrete members.
- Offers a higher strength connection between the precast elements than traditional joining methods.
- Eliminates costly and unsightly patchwork.
- No closure pours required between adjacent members.
- Tensile loads are transferred through the rebar, and are not dependent on the compressive strength of the concrete.
- Optimizes production time and is convenient and flexible to use.

## How to Install

The LENTON INTERLOK couplers are fastened to the rebar and placed into the precast forms. Easy-to-use, reusable form-mounting fixtures are available for this purpose. The LENTON INTERLOK incorporates a taper thread which creates a positive lock that seals the coupler. This threaded system aids the alignment of the coupler onto the rebar, providing a full strength mechanical connection in both tension and compression.

The splice is completed on site by inserting the exposed dowel of the adjoining structural member into the sleeve and filling the coupler with HY10L high strength grout from Pentair. This can be either poured or pumped into the sleeve. The inlet and outlet ports on the sleeve accept commonly available rigid PVC or flexible plastic tubes.

The complete splice provides load path continuity allowing precast structures to function as continuous members.

A detailed installation guide is available from Pentair outlining correct installation, grout mixing and formwork mounting procedures.



Standard 1/2" (13 mm) and 3/4" (19 mm) PVC or flexible tubing is used for the inlet and outlet ports.



The taper threaded sleeve keeps the bar in axial alignment to increase field tolerance of the rebar dowels.



LENTON INTERLOK grout (HY10L), can be pumped or poured into the sleeves at the jobsite.

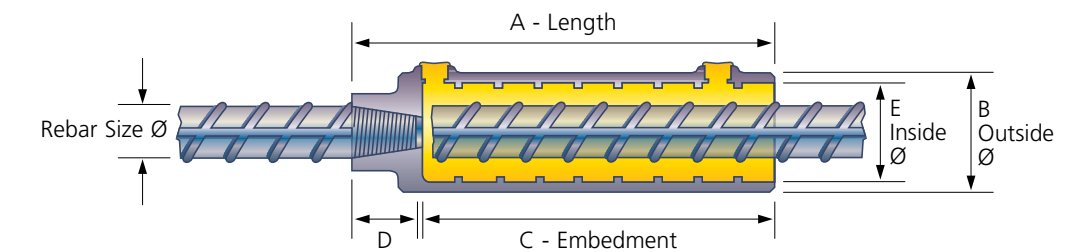
## How to Specify

**By Name:**  
Mechanical splices shall be LENTON INTERLOK, manufactured by Pentair.

**Generic:**  
Mechanical reinforcing steel splices shall meet building code requirements of developing in tension and compression as required by \*. The sleeve shall be produced as a casting from ductile iron conforming to ASTM A536 standards. One end of the sleeve shall consist of a positive locking tapered thread, while the opposing cylindrical side is designed with equally spaced concentric ribs. Grouting must be performed in accordance with the manufacturers recommended installation procedures.

\*as required by local norms/codes

## Product Specs



Rebar Size Designation	Number of Couplers per Bag of HY10L Grout			Part No.	Art No.	A		B		C		D		E	
	in-lb	Metric	Canadian			in.	mm	in.	mm	in.	mm	in.	mm	in.	mm
#5	16	15M	24	LK5	145575	7-13/16	199	2-9/16	65	6-1/8	156	7/8	22	1-7/8	48
#6	20	20M	25	LK6	145580	7-13/16	199	2-9/16	65	6-1/8	156	1-1/8	29	1-7/8	48
#7	22	—	26	LK7	145585	7-13/16	199	2-9/16	65	6-1/8	156	1-1/4	32	1-7/8	48
#8	25	25M	21	LK8	145590	8-5/8	219	2-11/16	68	7	178	1-3/8	35	2	51
#9	28	30M	17	LK9	145595	9-3/4	248	2-13/16	72	8	203	1-1/2	38	2-1/8	54
#10	32	—	13.5	LK10	145600	10-13/16	275	3	76	9	229	1-9/16	40	2-5/16	59
#11	36	35M	11.5	LK11	145605	11-15/16	303	3-1/8	79	9-7/8	251	1-11/16	43	2-7/16	62
	40	—	7	LK40	145610	15-3/16	386	3-11/16	94	12-3/4	324	2-1/4	58	2-3/4	70
#14	43	45M	7	LKT14	145611	15-3/16	386	3-11/16	94	12-3/4	324	2-1/8	54	2-3/4	70
	50	—	4	LKT50	145615	20-5/16	516	4-1/2	114	17	432	2-3/4	71	3-1/4	83
#18	57	55M	4.5	LKT18	145620	20-5/16	516	4-1/2	114	17	432	2-3/4	70	3-1/4	83

The system is designed to meet or exceed the ACI® and IBC® codes for Type 1 and Type 2 mechanical connections. The system is also designed to meet the requirements of AS3600, BS 8110, BS EN1992-1-1, BRL 504, and Hong Kong GS, in addition to other worldwide codes.

**WARNING**  
Pentair products shall be installed and used only as indicated in Pentair's product instruction sheets and training materials. Instruction sheets are available at [www.erico.pentair.com](http://www.erico.pentair.com) and from your Pentair customer service representative. Improper installation, misuse, misapplication or other failure to completely follow Pentair's instructions and warnings may cause product malfunction, property damage, serious bodily injury and/or death, and void your warranty.

